

HVP hydrophore tanks

A pressure HVP tank is made of low-carbon steel sheets, fully welded, of capacities 100, 150, 200, 300, 500, 1000 and 1500 litres. The water units with a hydrophore tank can be connected only to a non-pressure water intake. The tank can be installed only in the systems, in which max. pressure does not exceed the design pressure of a given tank type. Inside it is covered with a protective zinc coating.

The tank is supported in a vertical position by 3 legs welded on the tank circumference. In the cylinder part, elbow joints contain a water-gauge tube showing a water level in the tank. A cleaning hole is in the tank jacket. In the upper part of the tank there is a G2 hole, stopped with a threaded hob with a manometer installed.



Pressure tanks are designated for:

- supplying water to residential and farm buildings from:
 - own water intake
 - shallow water-bearing layers from timbered wells
 - drilled
 - ponds
 - reservoirs
 - hydrophore sets as a water and air tank
- allotments
- summer houses
- fountain supply.

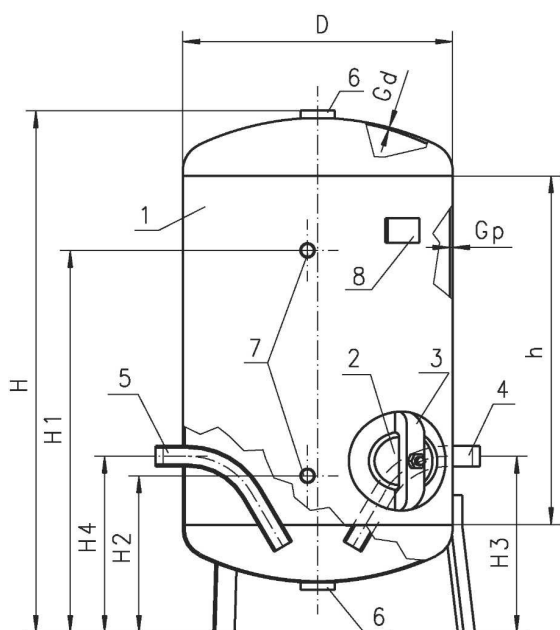
Tanks are hot-dip galvanised.

Picture gallery



Design and technical parameters

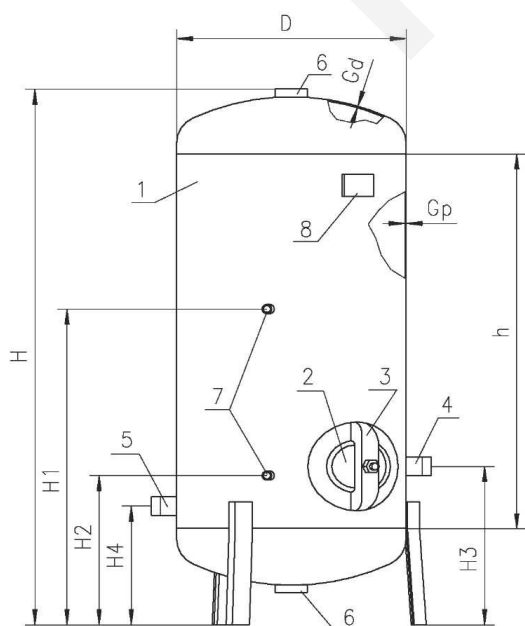
- HVP100, 200, 300, 500 tanks



1. Tank
2. Cleaning hole cover
3. Staple
4. Inlet-outlet pipe G 1 ¼" (for HVP100 = G1")
5. Inlet-outlet pipe G 1 ¼" (for HVP100 = G1")
6. G2" connector
7. G" water gauge connector
8. Nominal plate

Item	Drawing	Cap. m ³	Dz mm	H mm	h mm	H1 mm	H2 mm	H3 mm	H4 mm	Gp mm	Gd mm	Design pressure MPa	Initial pressure MPa	Design temp. [°C]	Weight [kg]
1.	HVP100	0,1	500	767	400	545	270	360	360	2,5	3,0	0,9	1,29	20	40
2.	HVP200	0,2	550	1066	712	780	320	360	360	2,5	3,0	0,9	1,29	20	50
3.	HVP300	0,3	550	1354	1000	920	320	360	360	2,5	3,0	0,9	1,29	20	60
4.	HVP500	0,5	750	1387	1000	970	370	425	425	2,5	3,0	0,6	0,86	20	115

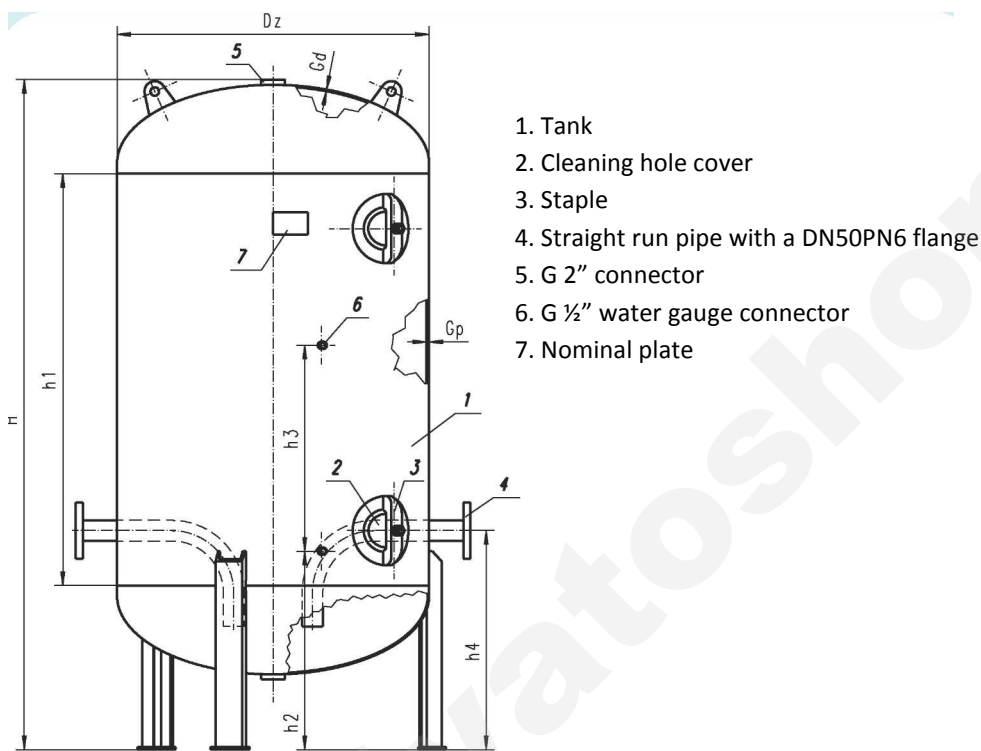
- HVP101, 151, 202, 201, 301 tanks



1. Tank
2. Cleaning hole cover
3. Staple
4. Inlet-outlet pipe G 1 ¼" (for HVP100 = G1")
5. Inlet-outlet pipe G 1 ¼" (for HVP100 = G1")
6. G2" connector
7. G" water gauge connector
8. Nominal plate

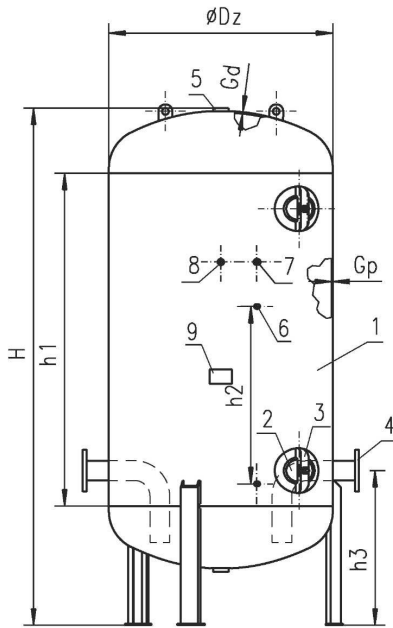
Item	Drawing	Cap. m ³	Dz mm	H mm	h mm	H1 mm	H2 mm	H3 mm	H4 mm	Gp mm	Gd mm	Design pressure MPa	Initial pressure MPa	Design temp. [°C]	Weight [kg]
1.	HVP101	0,1	500	767	400	470	270	360	270	2,2	2,5	0,6	0,86	20	39
2.	HVP151	0,15	500	967	600	570	270	360	270	2,2	2,5	0,6	0,86	20	45
3.	HVP202	0,2	500	1217	850	670	270	360	270	2,2	2,5	0,5	0,72	20	48
4.	HVP201	0,2	550	1066	712	780	370	360	270	2,2	2,5	0,6	0,86	20	48
5.	HVP301	0,3	550	1354	1000	920	320	360	270	2,2	2,5	0,6	0,86	20	57

- HVP1001 tanks



Drawing	Cap. m ³	Dz mm	H mm	h1 mm	h2 mm	h3 mm	h4 mm	Gp mm	Gd mm	Design pressure MPa	Initial pressure MPa	Design temp. [°C]	Weight [kg]
HVP1001	1,0	908	1952	1200	578	600	638	4	4	0,8	1,14	20	208

- HVP1500 tanks



1. Tank
2. Cleaning hole cover
3. Staple
4. Straight run pipe with a DN80PN10 flange
5. G 2" connector
6. G 1/2" water gauge connector
7. G 1/2" manometer connector
8. G 1/2" connector
9. Nominal plate

Drawing	Cap. m ³	Dz mm	H mm	h1 mm	h2 mm	h3 mm	Gp mm	Gd mm	Design pressure bar	Initial pressure bar	Design temp. [°C]	Weight [kg]
HVP1500	1,5	1010	2332	1500	800	700	5	5	10	14,3	20	340